

How to replace the Batteries to an ALL-TEST IV PRO

Supplies needed:

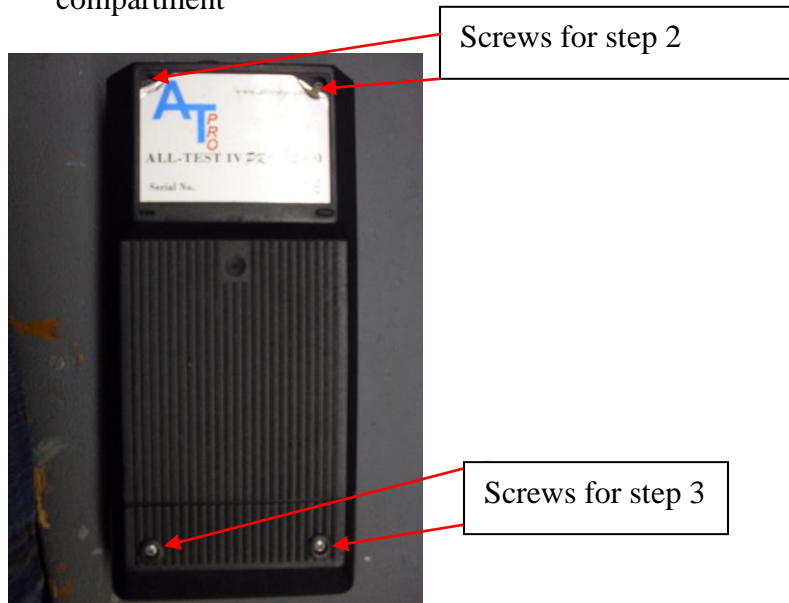
Philips head screw driver

Utility knife

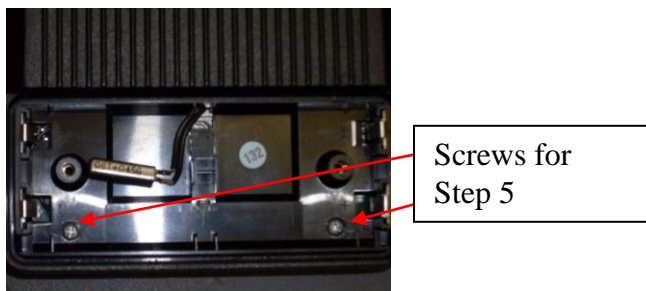
Nylon re-enforced tape

(6) 1.2V Ni-MH batteries ONLY

1. Turning over the ALL-TEST IV PRO (ATIV).
2. Under the serial label; by peeling back the upper corners of the label, remove the 2 screws.
3. Remove the 2 screws located on the bottom. This is the outside battery compartment



4. Remove the cover to the battery compartment and remove the 4 AA batteries
5. Inside the battery compartment there are 2 more screws remove them.

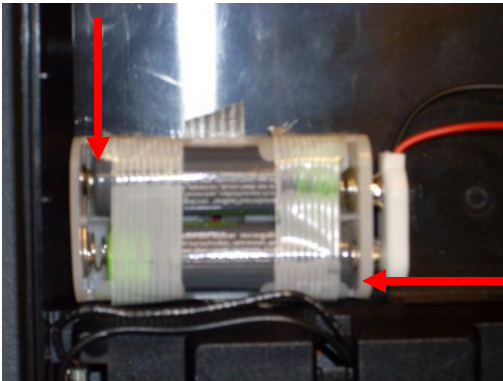


6. With the ATIV still face down, open the case like a clam shell. The back half will flip to the left side.



This is how the ATIV should look when you open the case up.

7. Remove the tape holding the 2 internal batteries down.
8. Verify that there are no “blocks” on the internal battery holder next to the positive battery terminals.
 - a. If there are blocks using a utility knife remove them.



The red arrows indicate the locations of the “blocks” that may need to be removed if there are there.

9. Assembly is in reverse order.

Note: when installing the internal batteries verify that voltage is present at the connector. When using the enclosed battery holder and no voltage is present, rotate the batteries until voltage is present, then tape batteries into place.

Note: when replacing the tape to the internal batteries it is recommended using 2 pieces of tape at each end (see photo)

Note: when closing case verify that the wires do not block the charging or communication ports of the ATIV